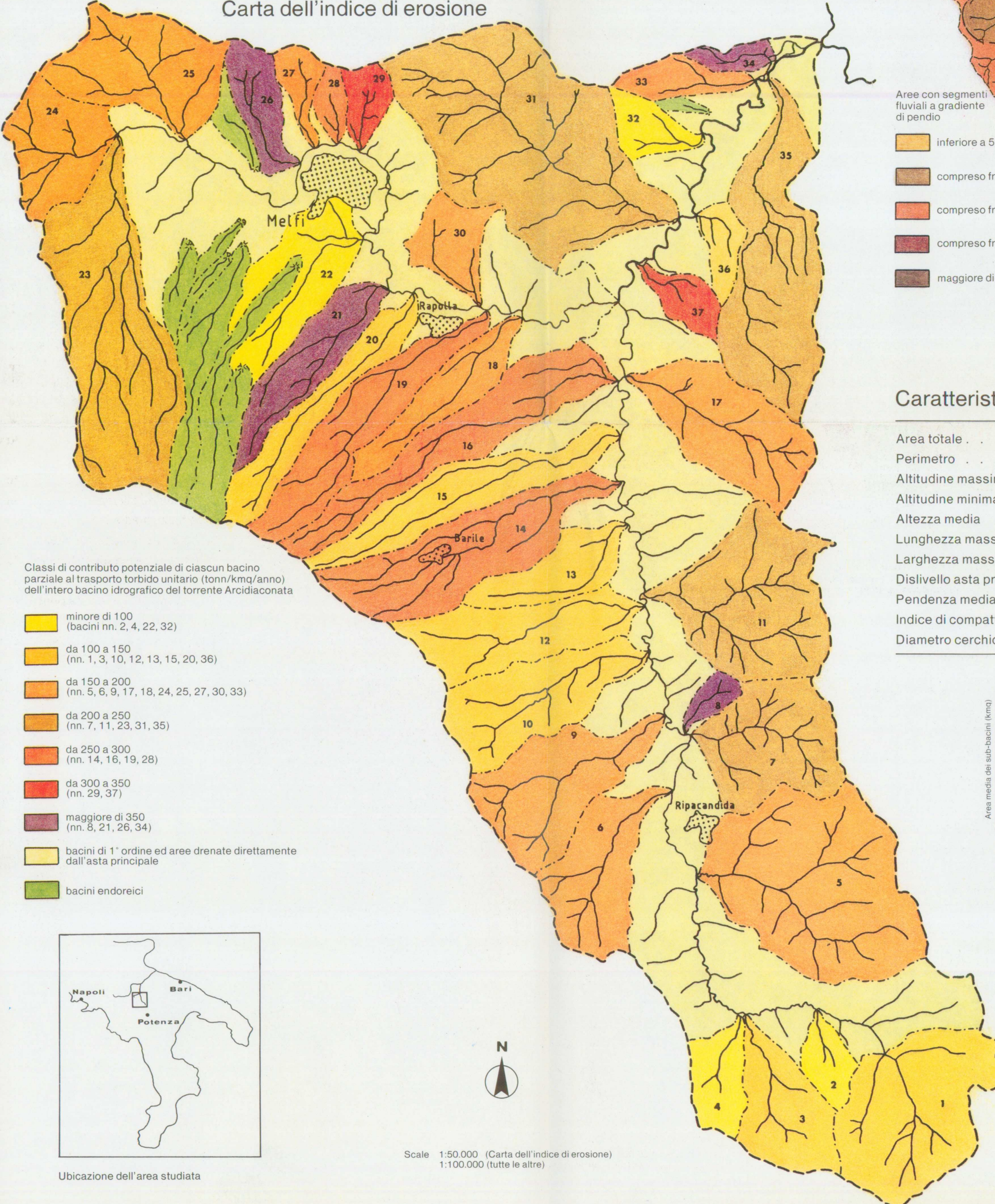


Carmen Battista, Federico Boenzi & Luigi Pennetta

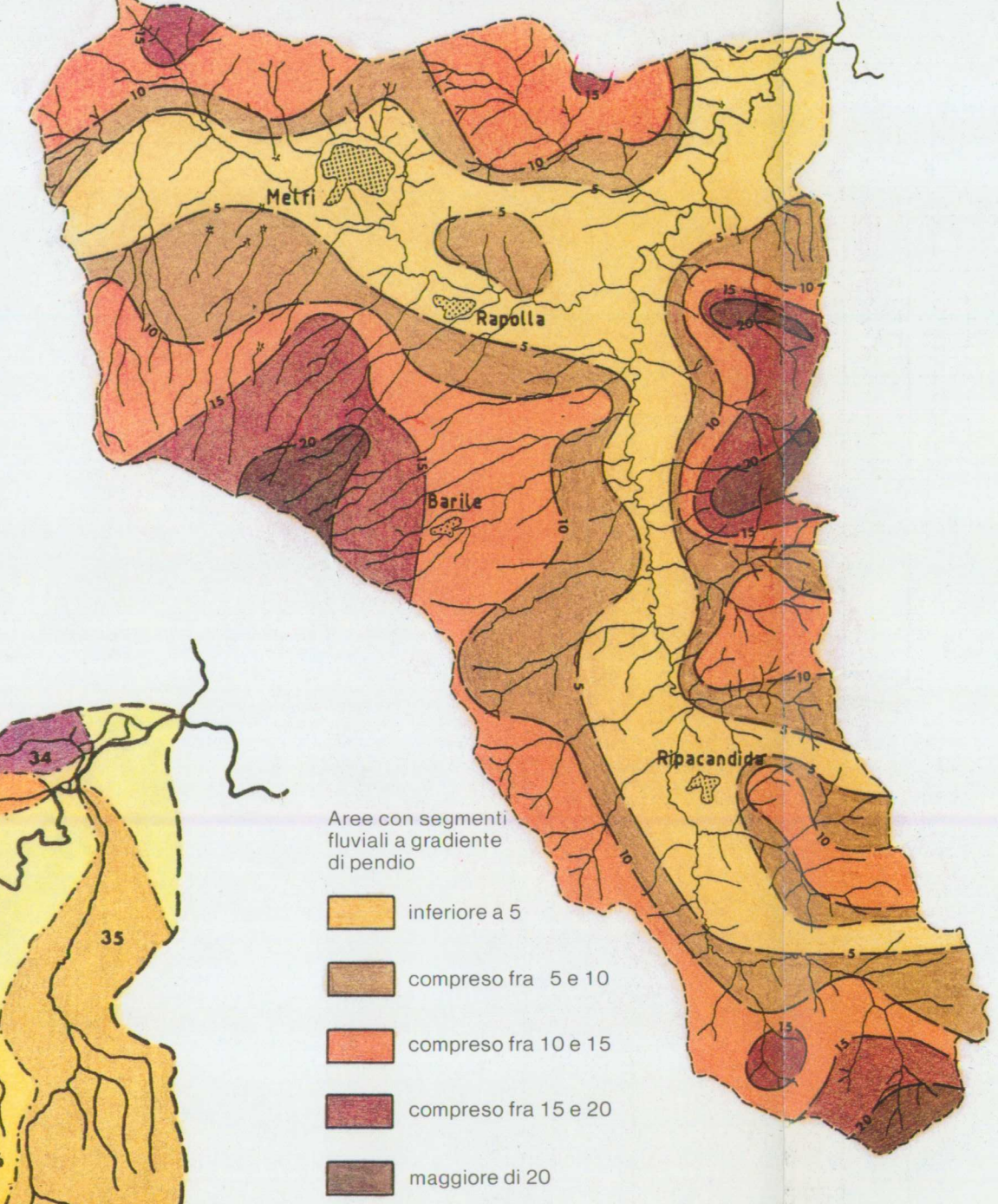
# BACINO IDROGRAFICO DEL TORRENTE ARCIDIACONATA IN BASILICATA

Con il contributo finanziario della REGIONE BASILICATA, Dipartimento AGRICOLTURA e FORESTE, Ufficio FORESTE, ECOLOGIA, CACCIA e PESCA

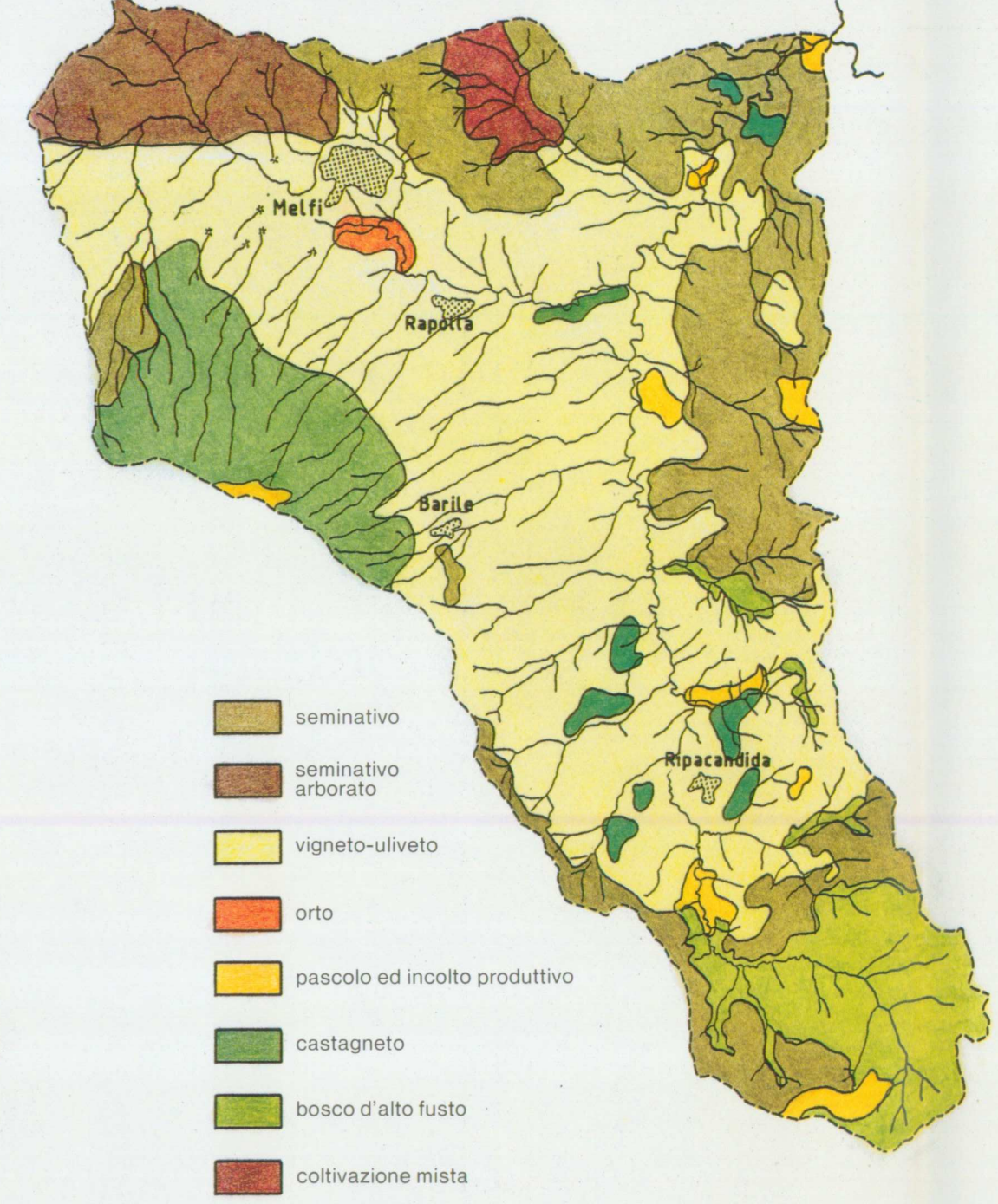
## Carta dell'indice di erosione



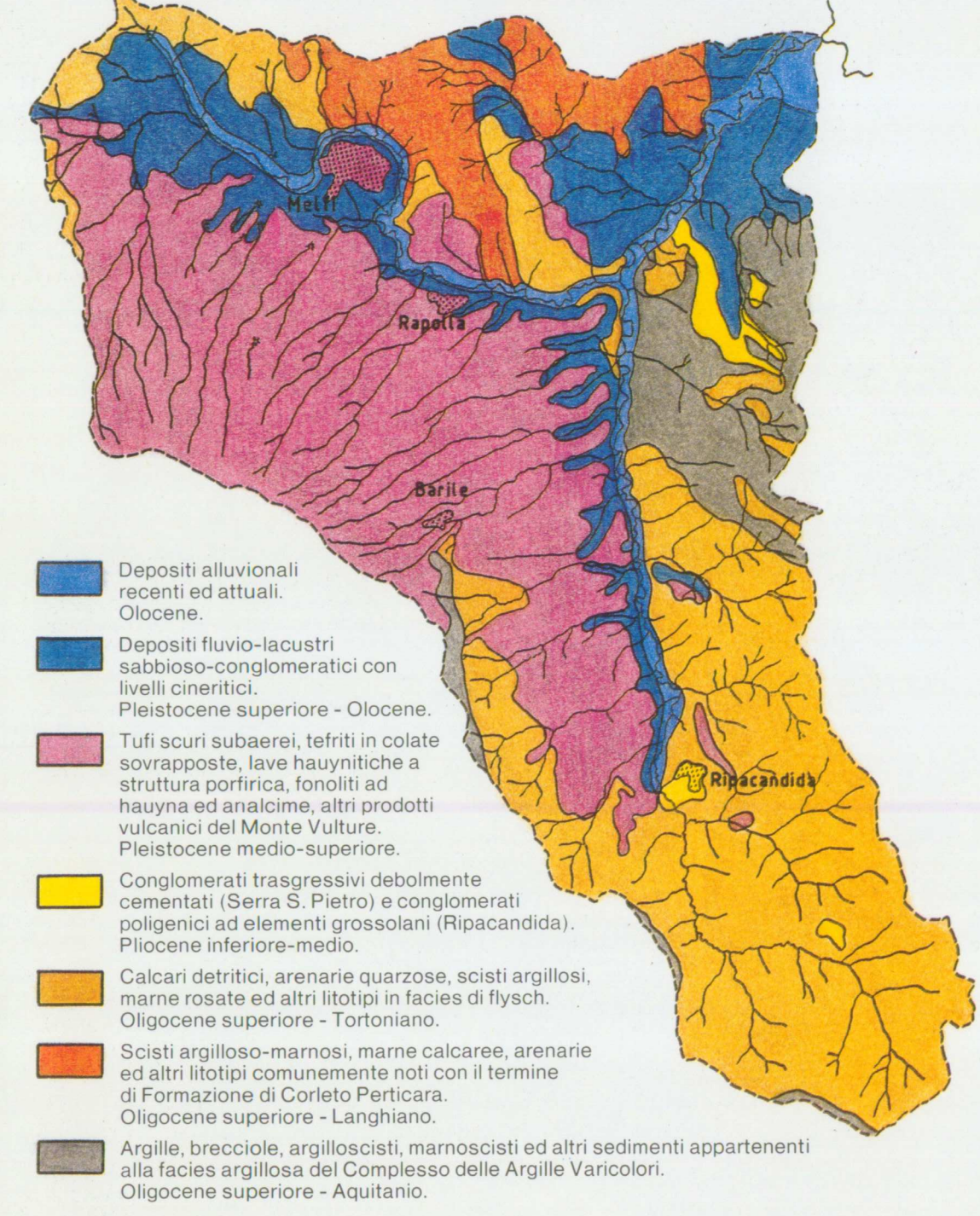
## Carta dei gradienti di pendio



## Carta dell'uso del suolo



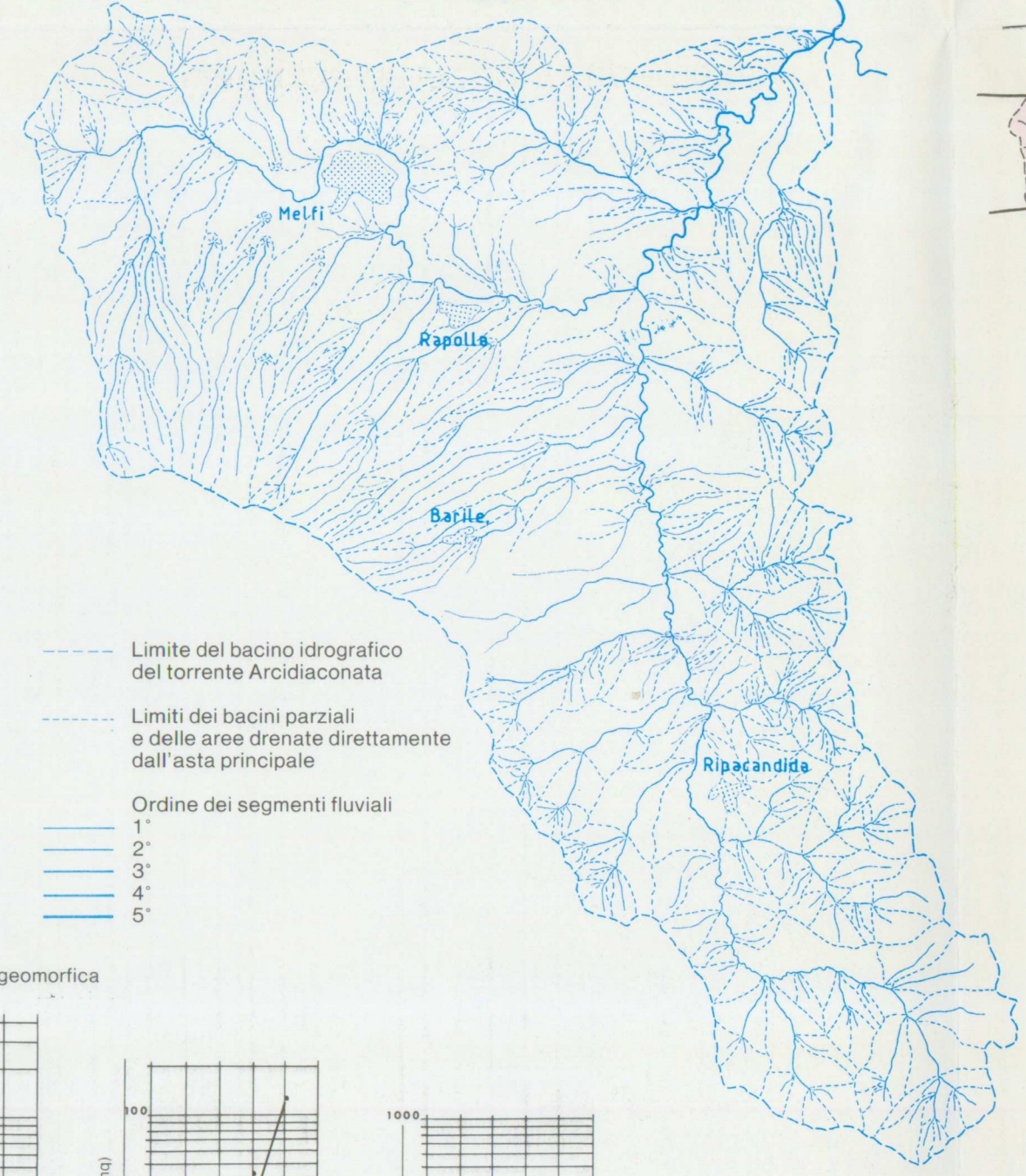
## Schema geolitologico



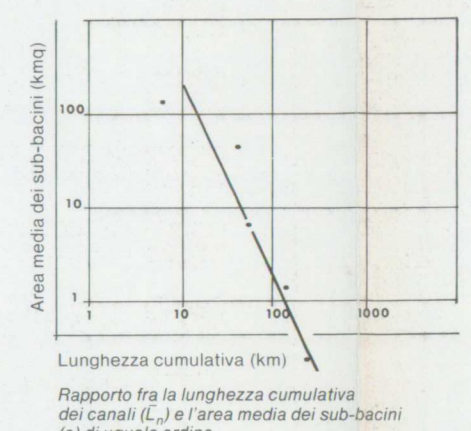
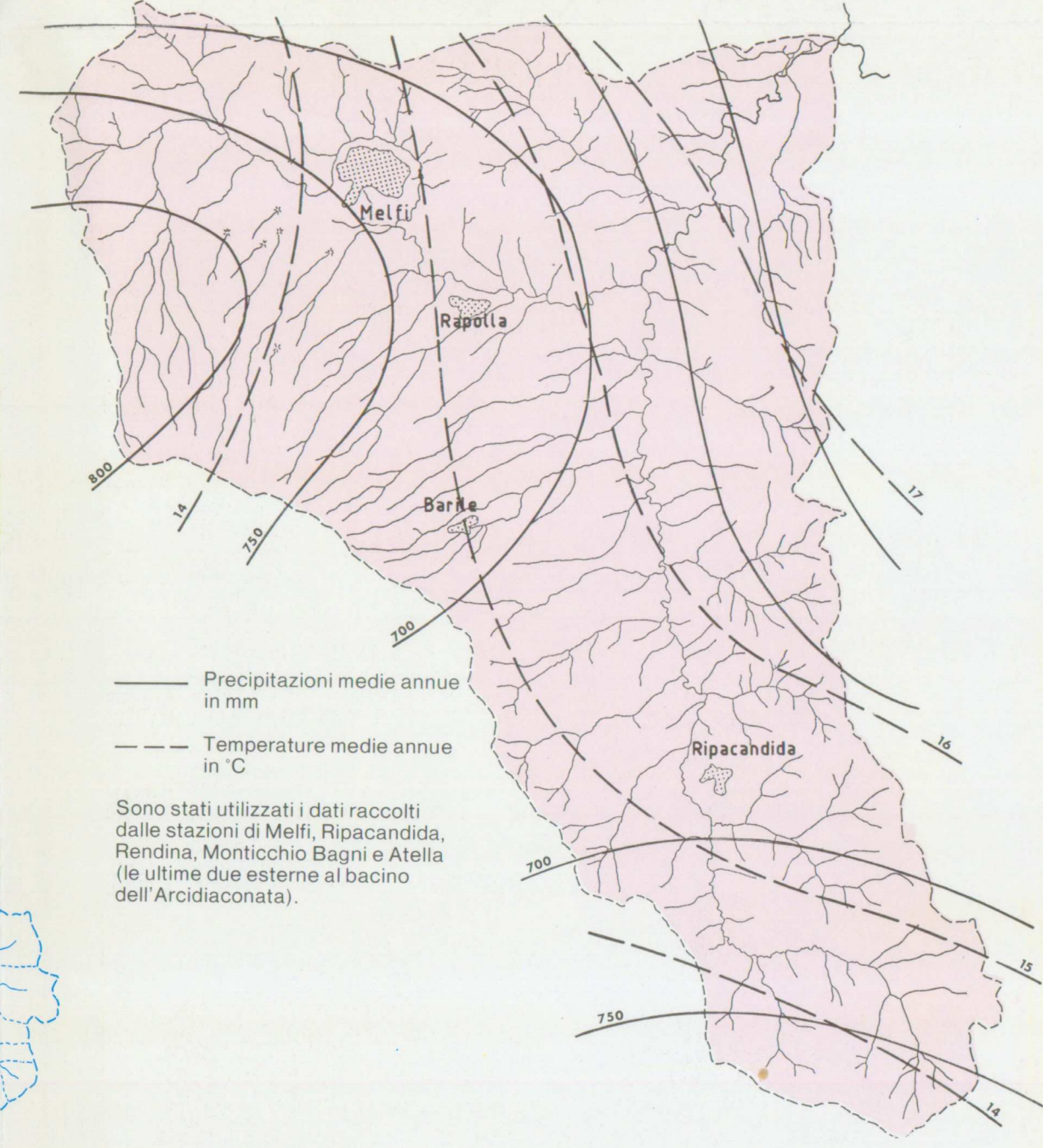
## Caratteristiche del bacino

Area totale . . . . .	kmq	135.894
Perimetro . . . . .	km	36.251
Altitudine massima . . . . .	m	1326 s.l.m.
Altitudine minima . . . . .	m	196 s.l.m.
Altezza media . . . . .	m	436 s.l.m.
Lunghezza massima bacino . . . . .	km	18.785
Larghezza massima bacino . . . . .	km	12.525
Dislivello asta principale . . . . .	m	679
Pendenza media asta princ. . . . .	%	3.619
Indice di compattezza . . . . .	--	0.871
Diametro cerchio equival. . . . .	km	13.154

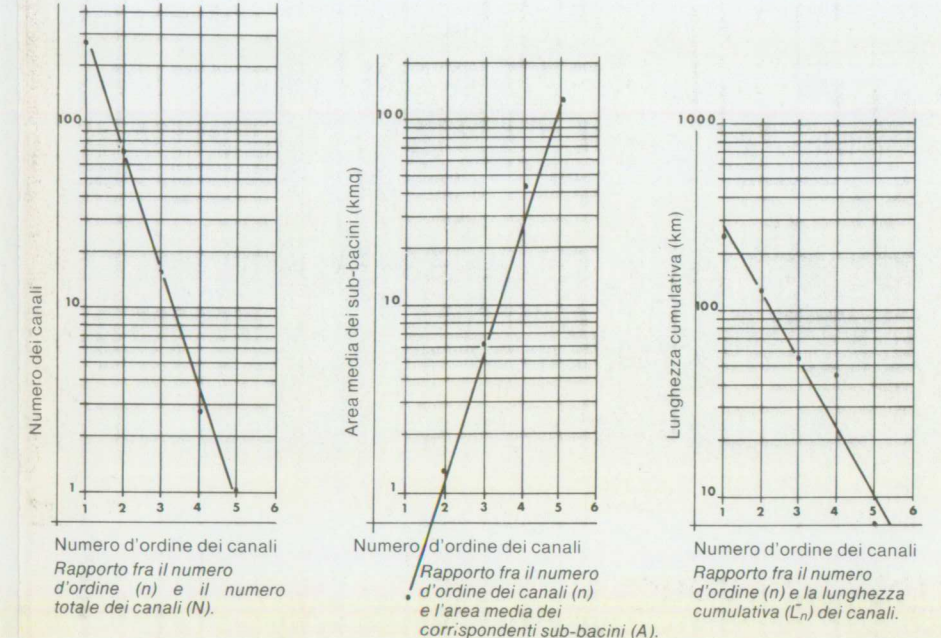
## Carta del drenaggio superficiale



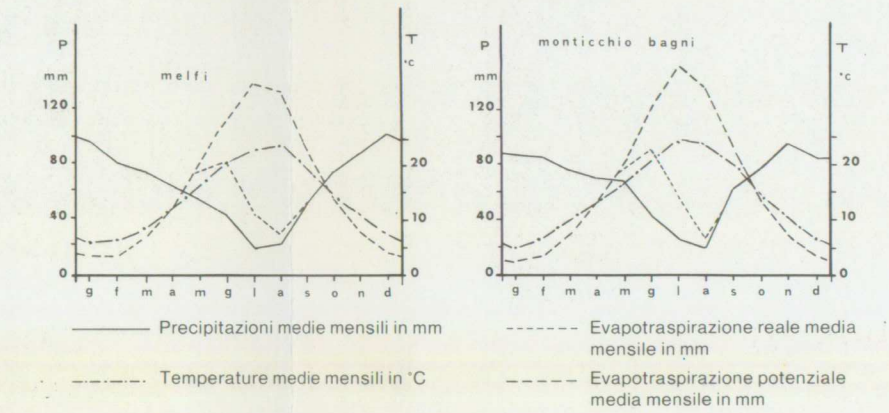
## Carta del clima



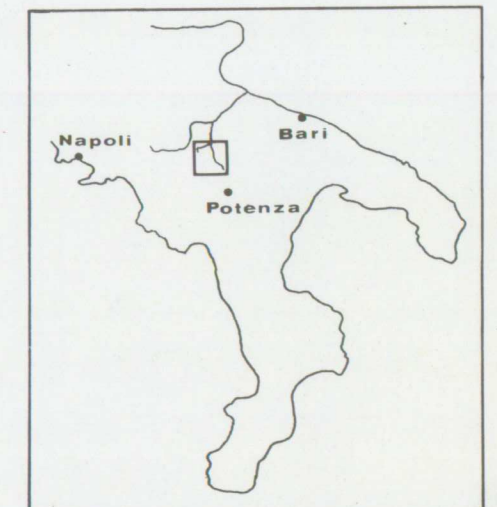
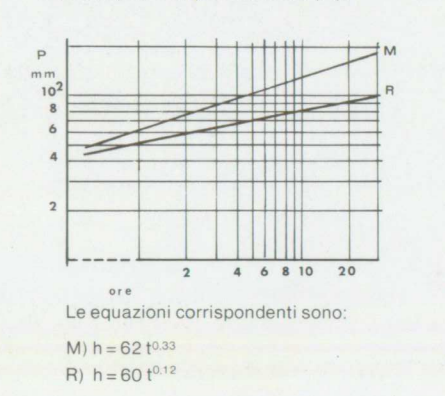
### Diagrammi riepilogativi dell'analisi geomorfica



### Bilancio idrico secondo Thornthwaite & Mather (1957)



### Primo caso critico di piogge orarie a Melfi (M) e Ripacandida (R).



Scale 1:50.000 (Carta dell'indice di erosione) 1:100.000 (tutte le altre)