

Hadjer BOUSBA^{1*}, Ramdane MARMI¹, Nabil CHABOUR¹, Manuel LA LICATA², Mattia DE AMICIS³, Alberto BOSINO³

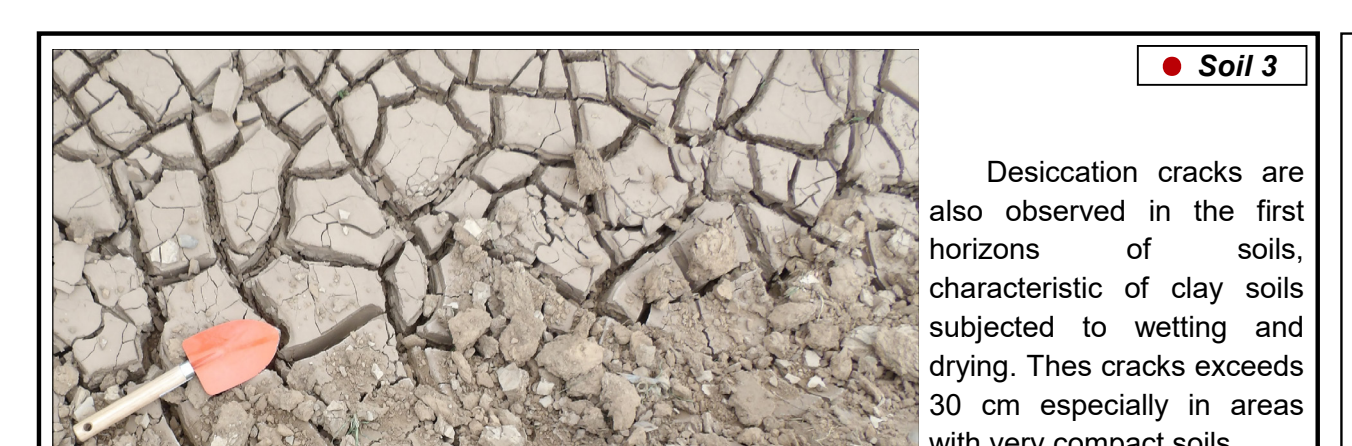
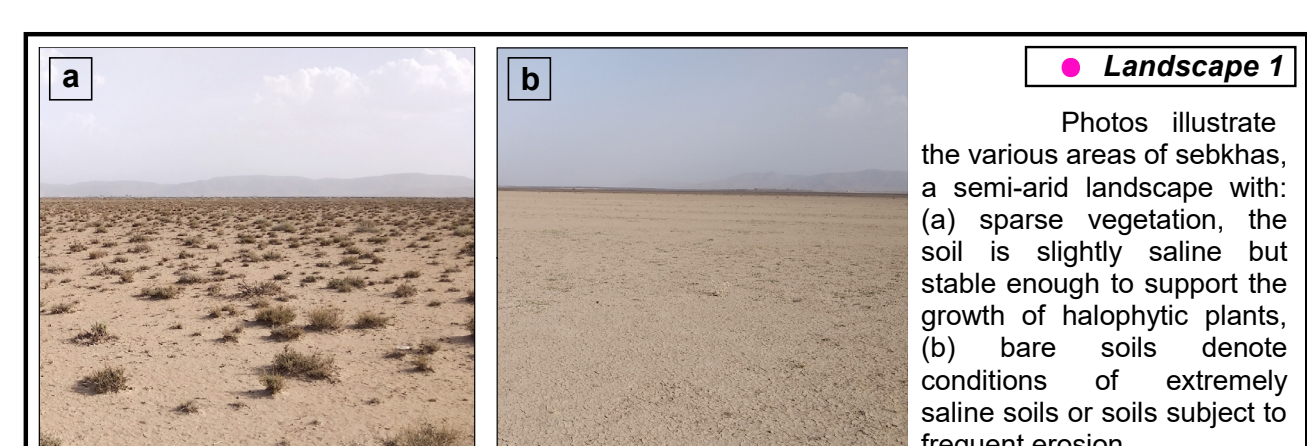
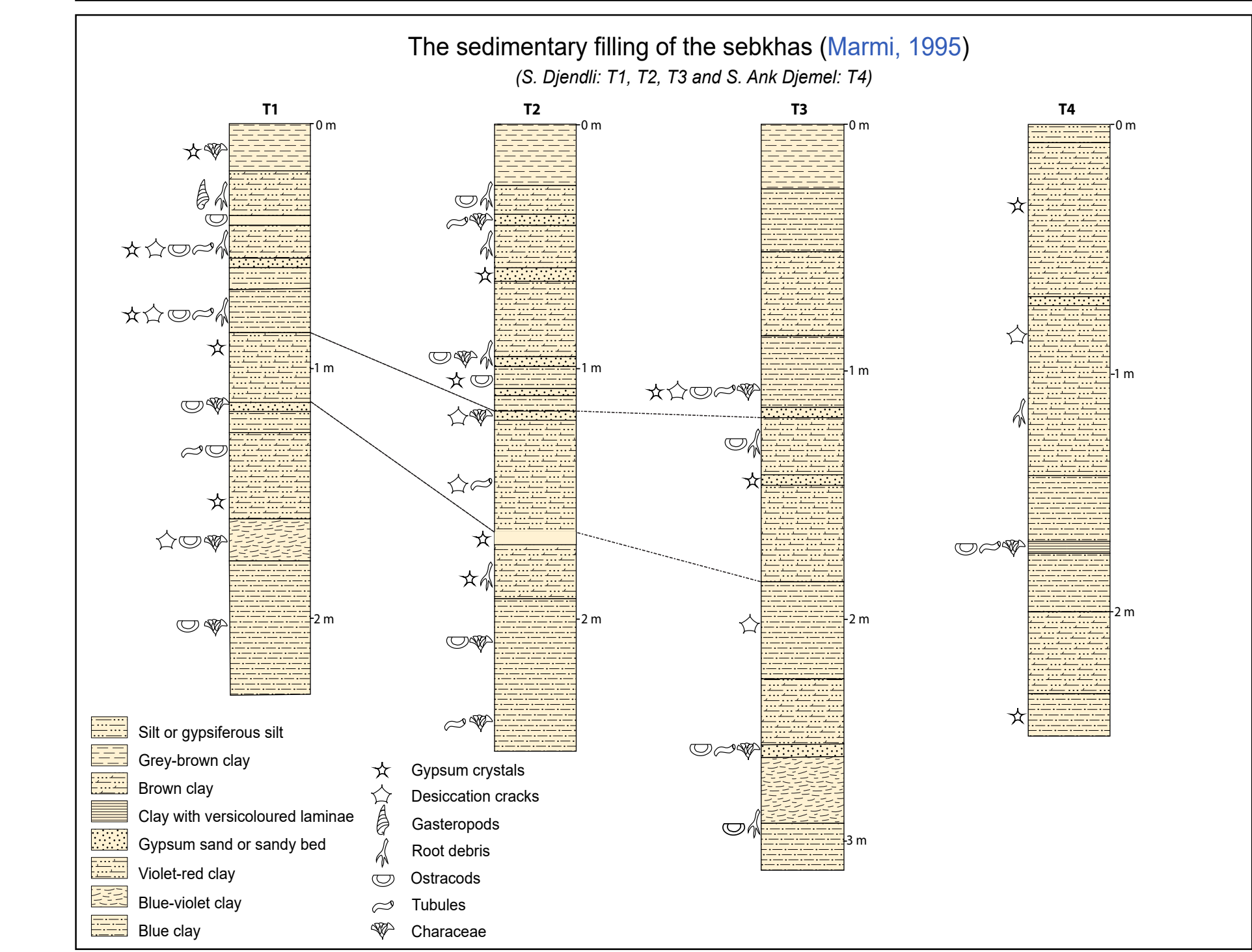
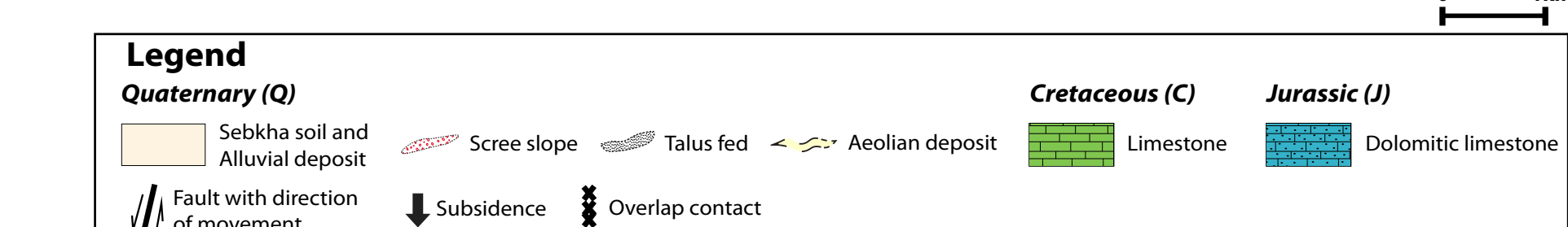
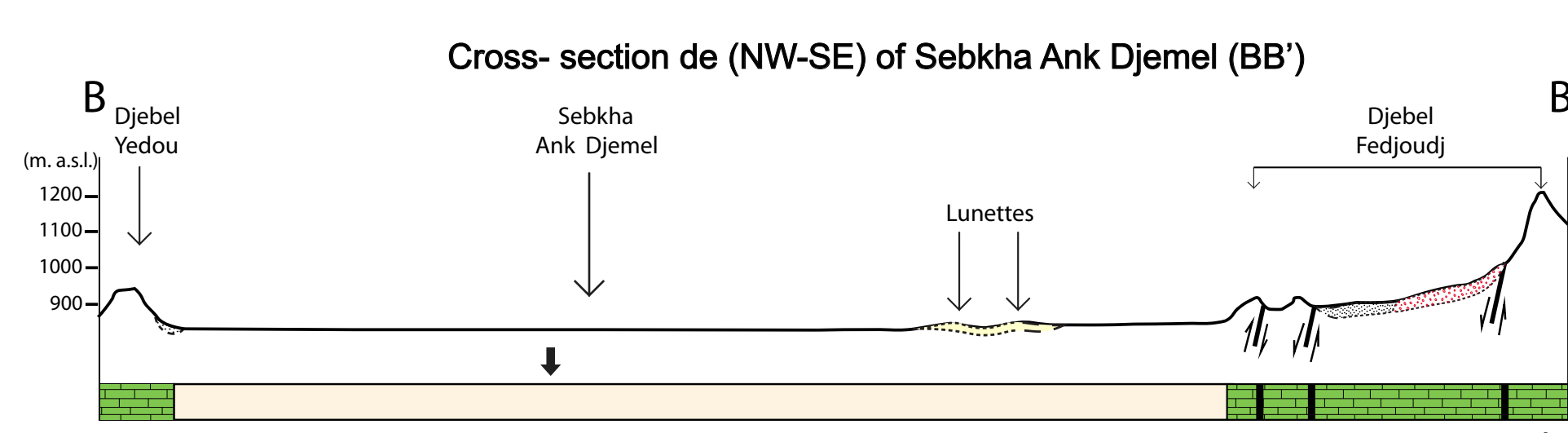
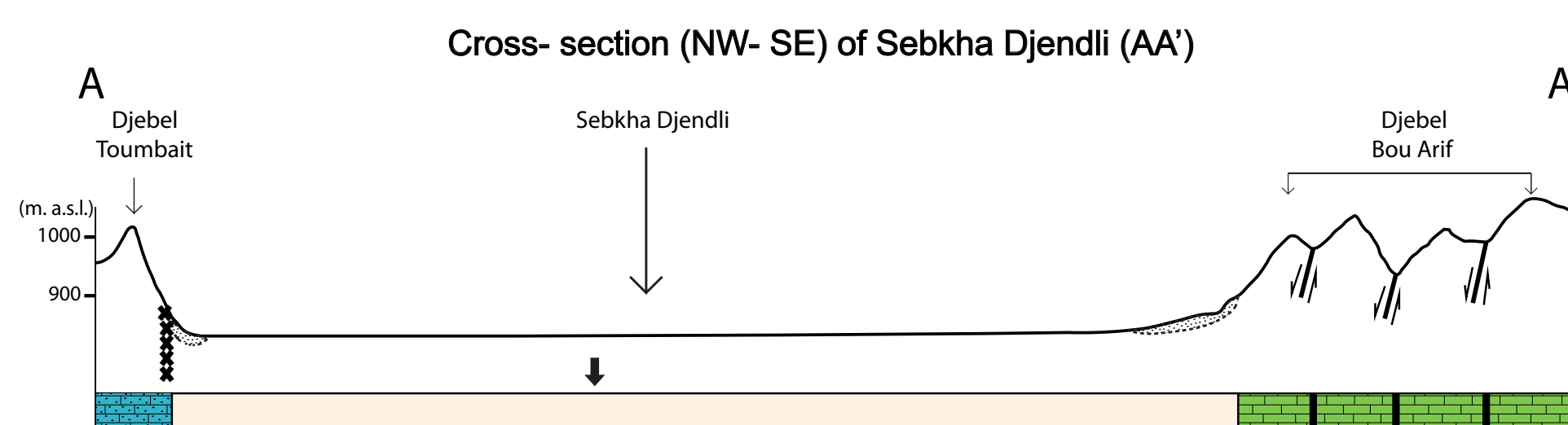
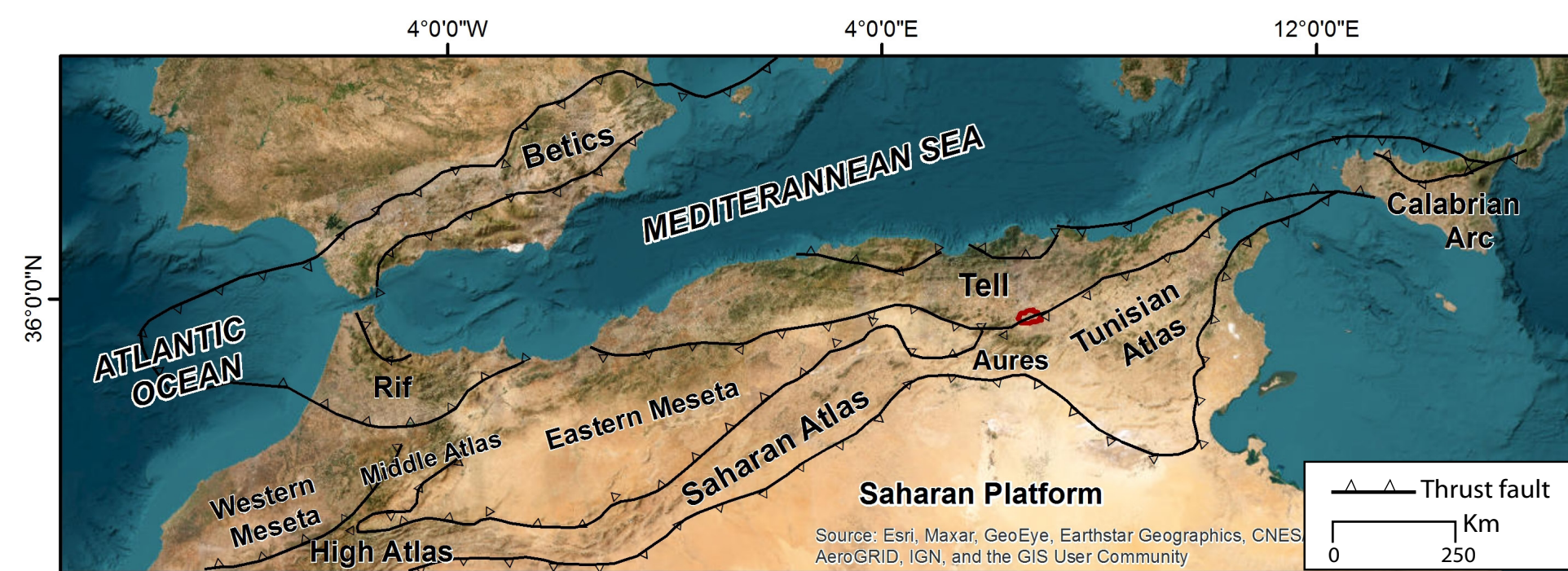
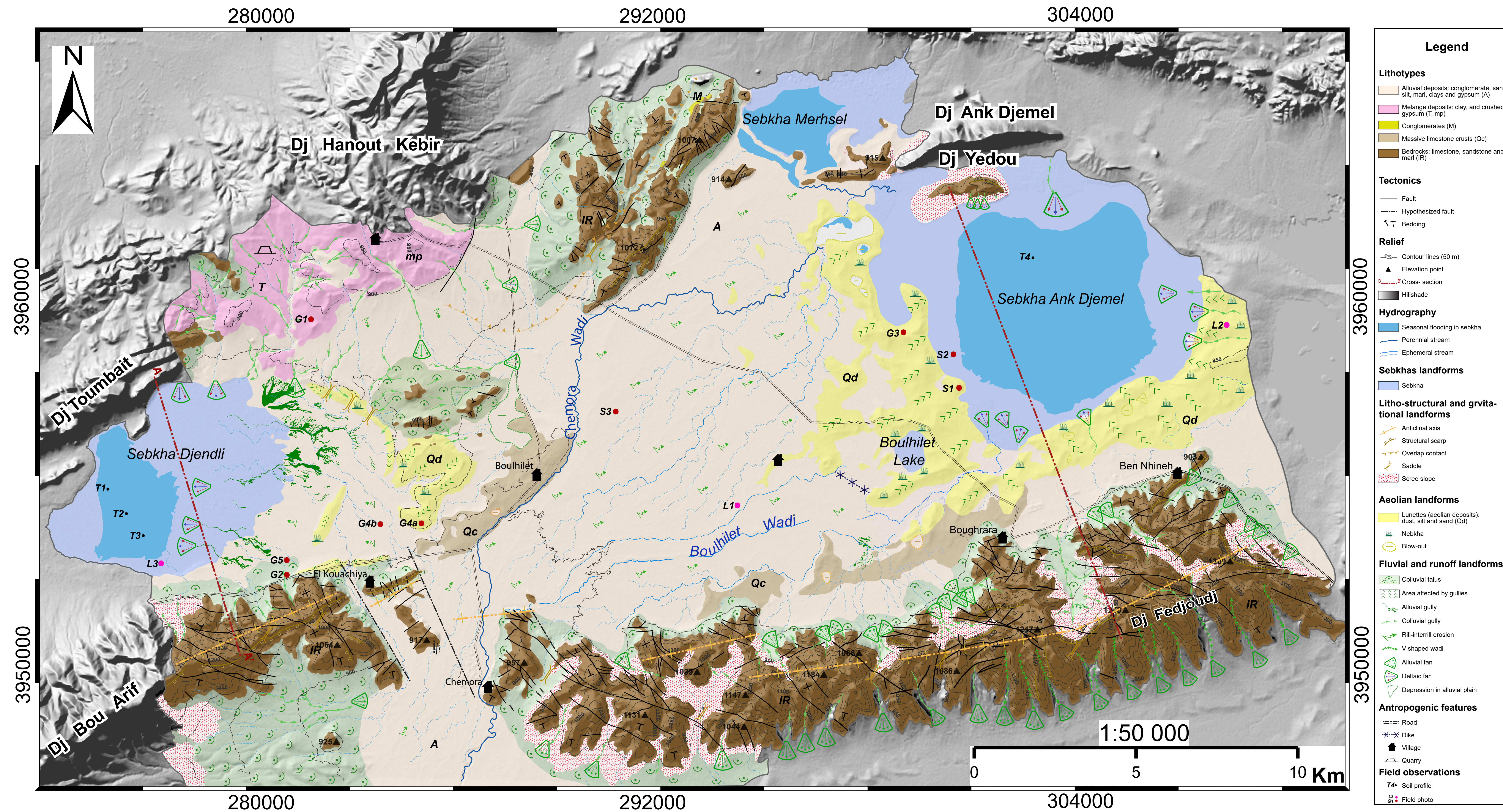
Assessment of geomorphological landforms and features in the Sebkhhas region of the Boulhilet Plain, north-eastern Algeria

¹ Geology and Environment Laboratory, University of Constantine 1, Road Ain El Bey Zouagbi Slimane Constantine 25 000, Algeria.

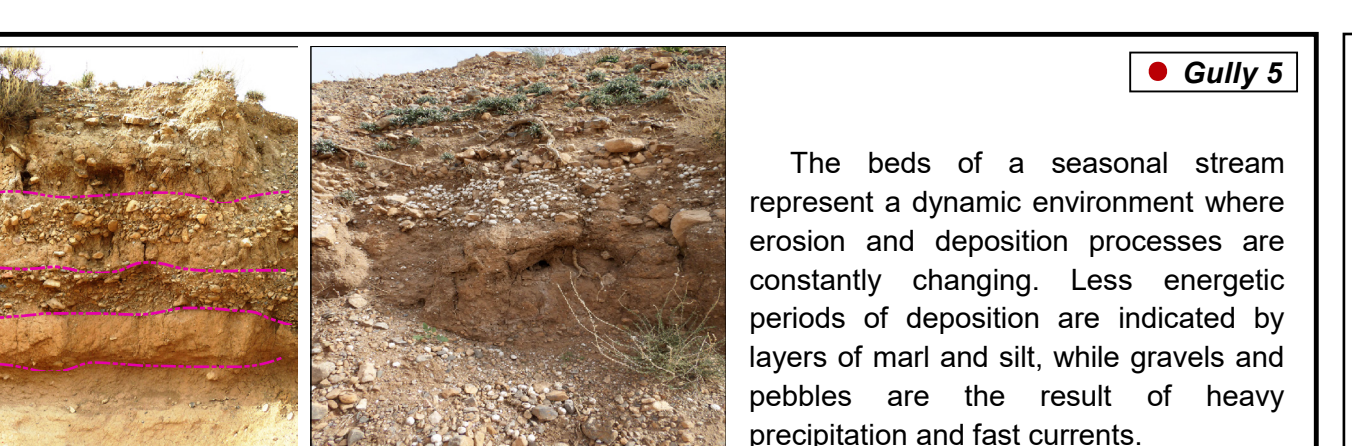
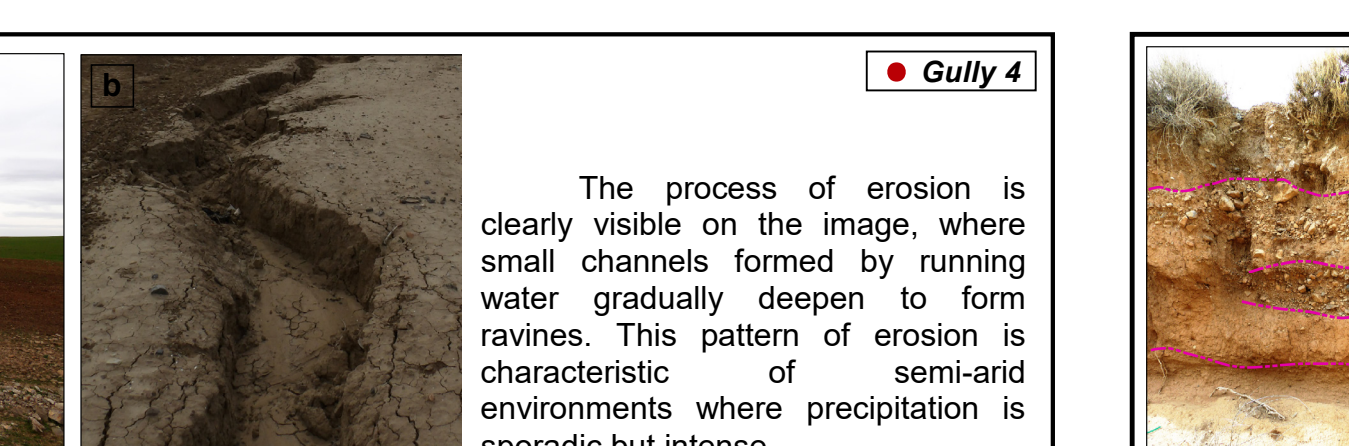
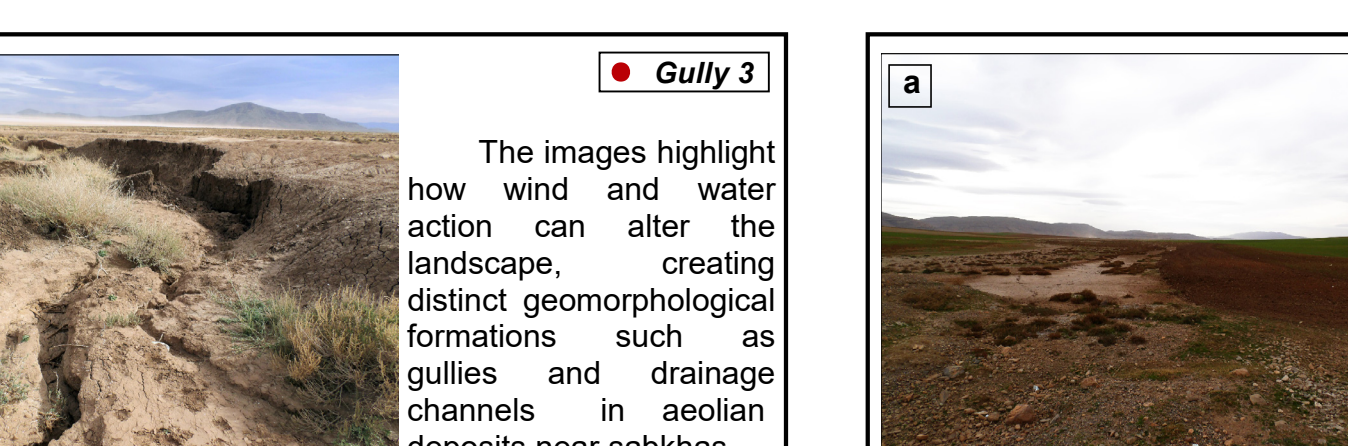
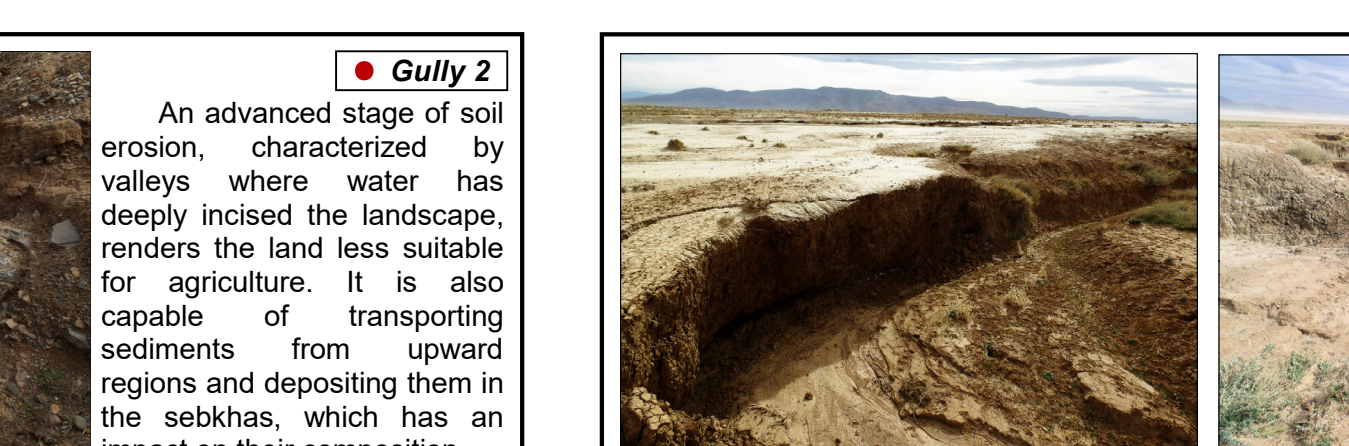
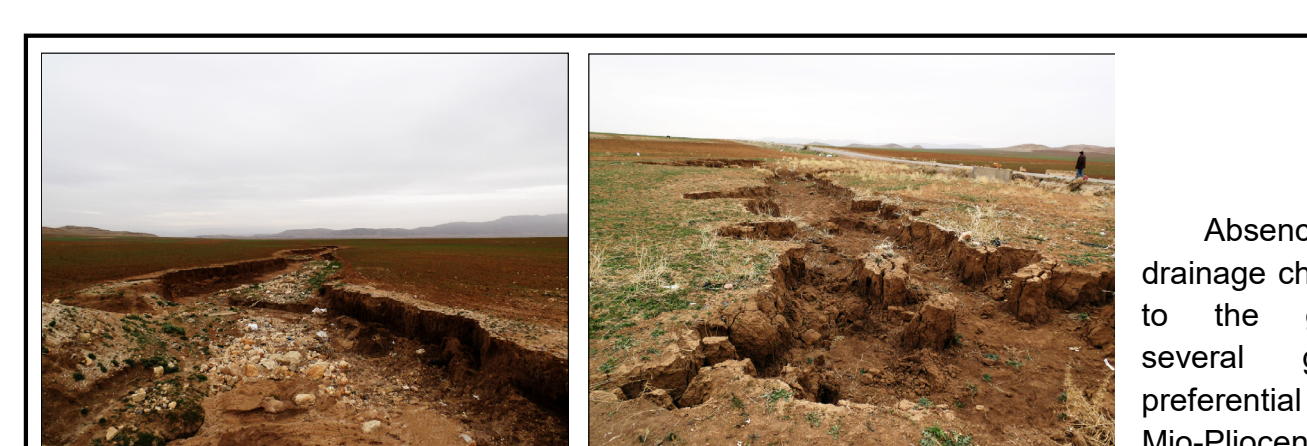
² Working Group on Soil Erosion and Feedbacks, Landscape Functioning, Leibniz Centre for Agricultural Landscape Research (ZALF), Eberswalder Straße 84, 15374 - Müncheberg, Germany.

³ Department of Earth and Environmental Sciences, University of Milano-Bicocca, Piazza della Scienza 1, 20126 - Milano, Italy.

* Corresponding author: Hadjer Bousba (hadjer.bousba@doc.umc.edu.dz)



Basemap 1:50,000 at print scale (A0): created by the author, Hadjer Bousba, using geomorphological cartography techniques and photo interpretation (1:50,000 geological maps, 1:20,000 aerial photographs, Landsat and Google Earth images, as well as field investigations conducted in 2023, 2024 and 2025. Coordinate System: WGS 1984 UTM Zone 32N



The map key does not distinguish between active and inactive forms, because all the mapped landforms, selected according to the ISPRa methodology (Campobasso et al., 2018, 2021), are active or can be reactivated under current morphoclimatic conditions.